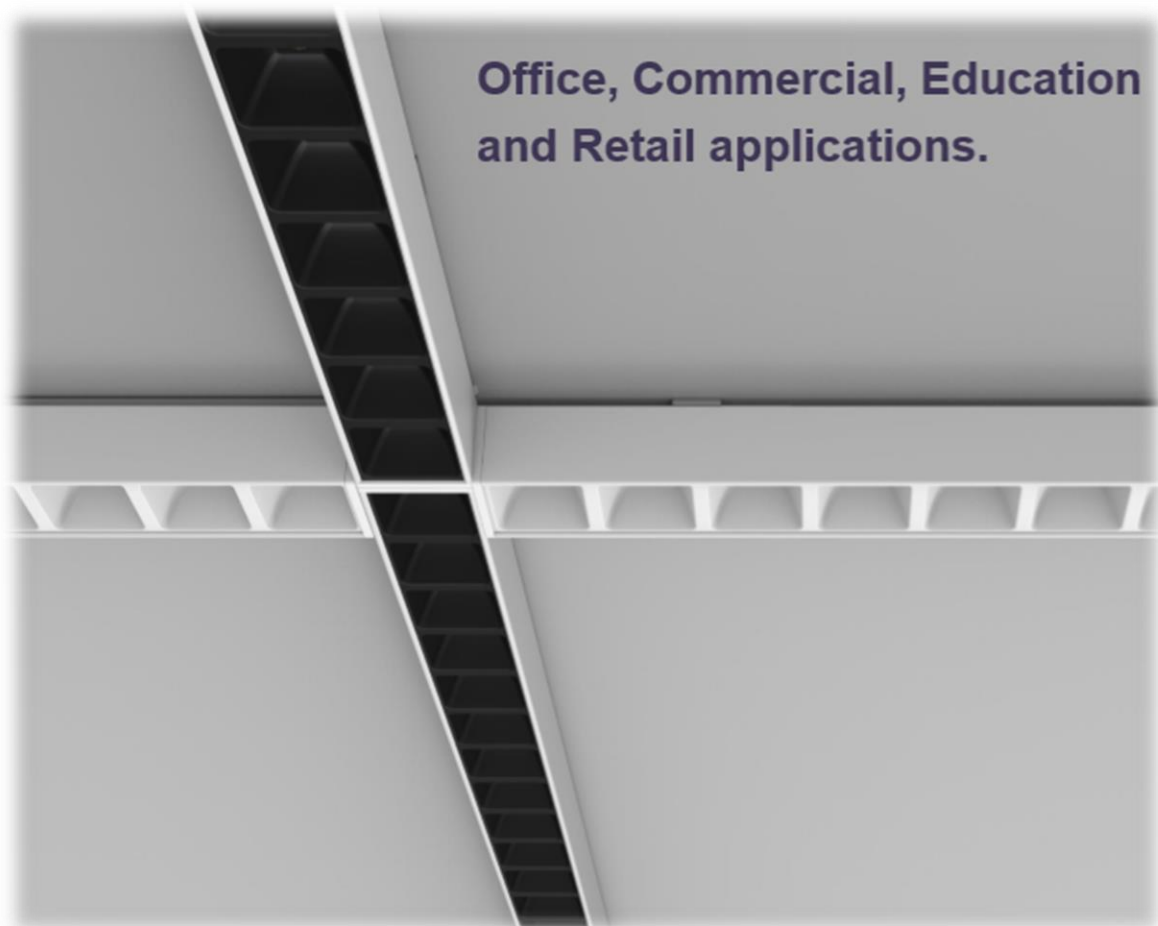


LUMENLINKS LTD

LyncoLinks Innovations



Simple installation takes less than a minute to clip on the Tee Bar a real alternative to panels

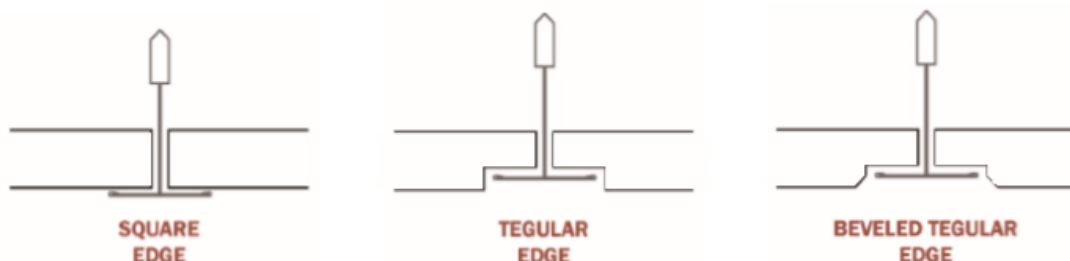


Office, Commercial, Education and Retail applications.

A Plug And Play Solution



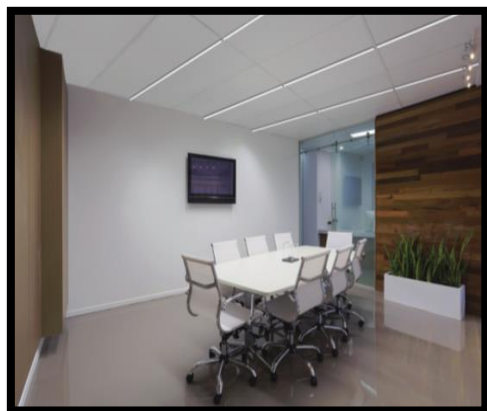
LyncoLink is an innovative lighting solution to work on 15mm and 24mm T grid ceiling system. While UGR is rated as low as 16 (Black reflector), it can achieve over 105lms/W. With its patent pending hanging structure, LyncoLink can be linked smoothly from one to another to create better ceiling image.



Can work with different tile edges on 15 and 24mm T bars.



- Elegant appearance of space ·
- Flexibility for creativeness of customers and designs ·
- Reduce overall project costs (materials and labour) ·
- Even light distribution



Up 60% faster installation
Over 40% material cost saving

Installation steps:



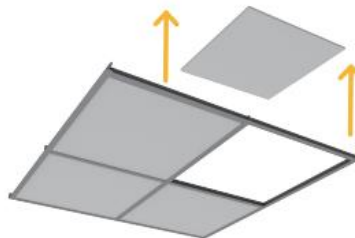
1. Move the hanger toward to the end cap as much as possible and turn the hanger vertically to the light fitting.



3. Place Arosa under the T bar closely.



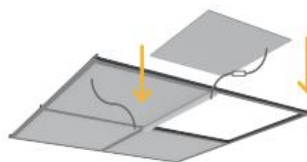
5. Place the Low Voltage cable alongside the T bar and connect to DC 48V power Supply.



2. Remove the tiles from the T grid for easy installation.

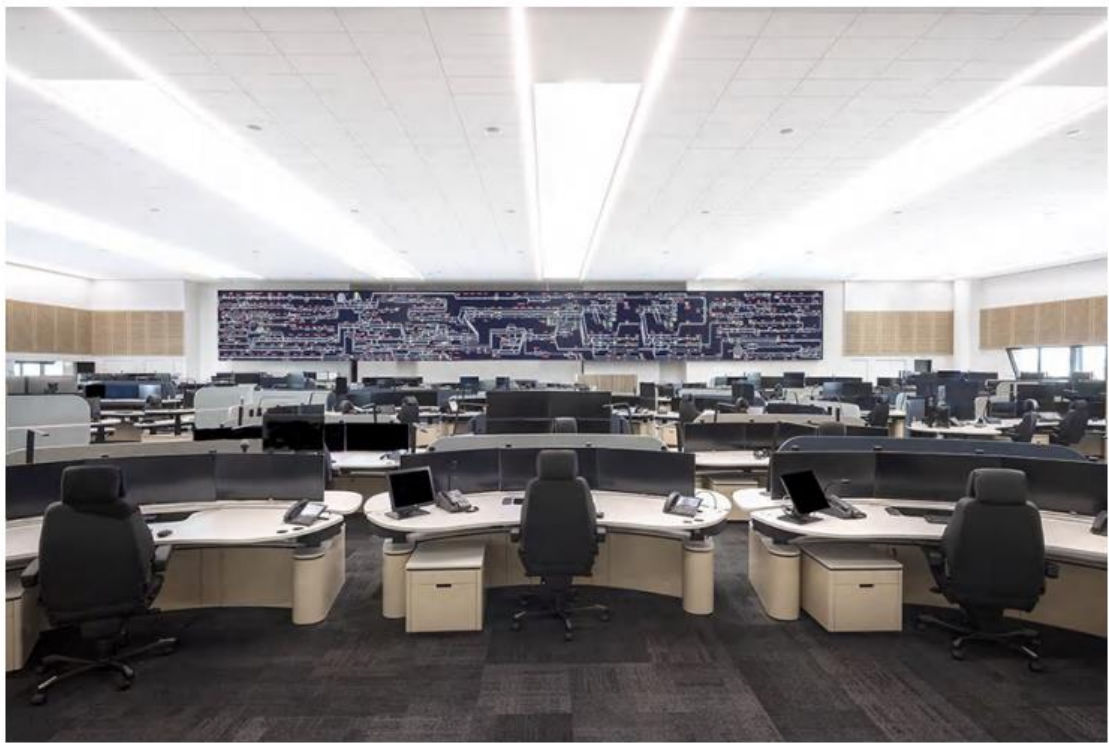


4. Turn the hanger clockwise and lock the hanger to the T bars.

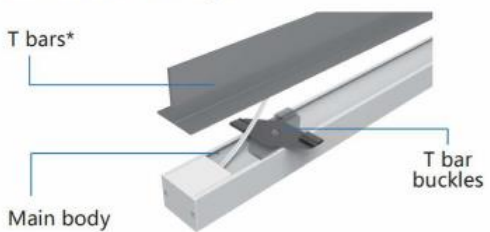


6. Place the tiles back to the ceiling.

Other Colour Temperature available, please contact for details.

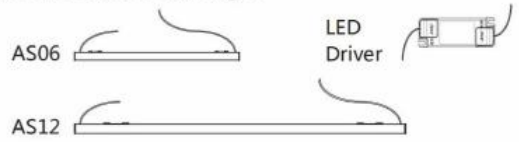


Product Line Drawing :

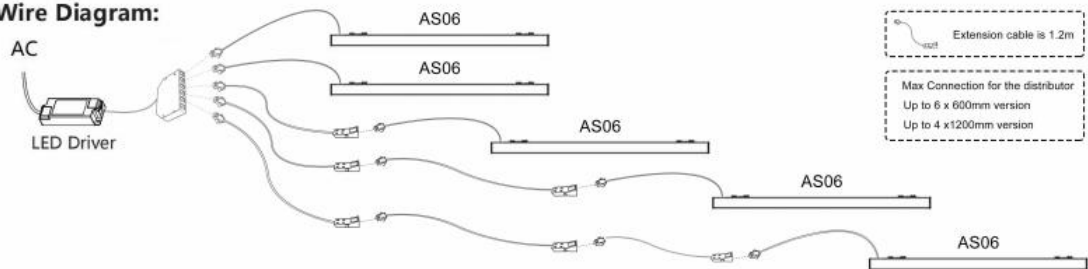


* T bar is not included in the product packaging. The T bar is apart of the ceiling. It is not necessary to modify the T bar to insatall Arose T Grid Lighting System.

Product Line Drawing :



Wire Diagram:



Arosa range can work with different tile edges on 15 and 24mm T bars :



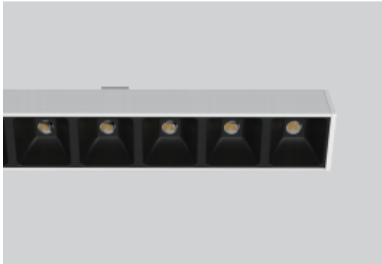
Installation steps:



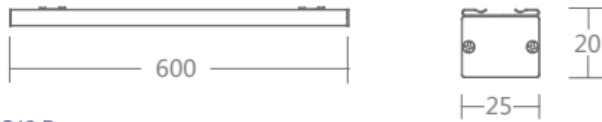
1. Move the hanger toward to the end cap as much as possible and turn the hanger vertically to the light fitting.

LyncoLinks Innovations Technical Spec Sheet

Arosa II B Size (Unit: mm)



AS06-B



AS12-B



Range	Description	Power(W)	Voltage (V)	Total Flux (lm)	Colour (K)	CRI	CC or CV	Length (mm)	Product Code
T Grid	Arosa 600mm Black Reflector	13	48	1200	3000	80	Constant Voltage	600	AS-06-B13-9M830
T Grid	Arosa 600mm Black Reflector	13	48	1280	4000	80	Constant Voltage	600	AS-06-B13-9M840



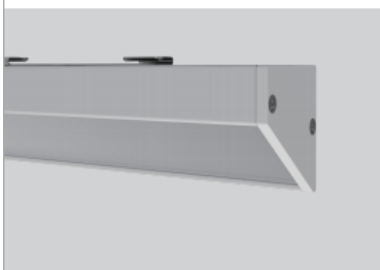
AS06-P



AS12-P



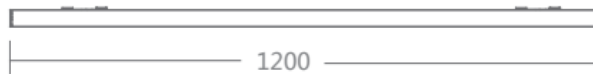
Range	Description	Power(W)	Voltage (V)	Total Flux (lm)	Colour (K)	CRI	CC or CV	Length (mm)	Product Code
T Grid	Arosa 600mm White Reflector	13	48	1300	3000	80	Constant Voltage	600	AS-06-P13-9M830
T Grid	Arosa 600mm White Reflector	13	48	1400	4000	80	Constant Voltage	600	AS-06-P13-9M840
T Grid	Arosa 1200mm White Reflector	26	48	2600	3000	80	Constant Voltage	1200	AS-12-P26-9M830
T Grid	Arosa 1200mm White Reflector	26	48	2800	4000	80	Constant Voltage	1200	AS-12-P26-9M840



AS06-W



AS12-W



Range	Description	Power(W)	Voltage (V)	Total Flux (lm)	Colour (K)	CRI	CC or CV	Length (mm)	Product Code
T Grid	Arosa 600mm Asymmetric	13	48	1150	3000	80	Constant Voltage	600	AS-06-W13-9M830
T Grid	Arosa 600mm Asymmetric	13	48	1200	4000	80	Constant Voltage	600	AS-06-W13-9M840
T Grid	Arosa 1200mm Asymmetric	26	48	2300	3000	80	Constant Voltage	1200	AS-12-W26-9M830
T Grid	Arosa 1200mm Asymmetric	26	48	2400	4000	80	Constant Voltage	1200	AS-12-W26-9M840

LUMENLINKS LTD



LyncoLinks Innovations

Up 60% faster installation Over 40% material cost saving



Before



After

Quadrupling the Lux Level



Great Retail Application To Enhance Your Products

After years of LED lighting business development, the full lighting market is flooded with LED 600x600, 600x1200 panels, troffers and round downlights. They are good, but they are just as the same as historical fluorescent lighting modules. LumenLinks is introducing an innovative, effective and refined lighting solution Lynco that creates better ceiling appearance and gives great benefits to the whole supply chain.

Call mobile 07496068889

Email bwelch@LumenLinks.com

Office 01992 582980

Website www.lumenlinks.com