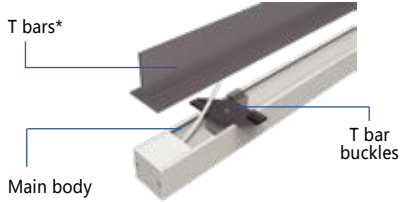
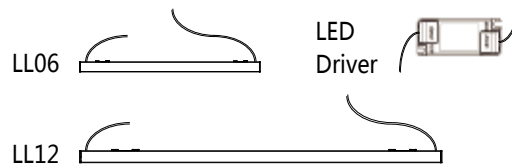


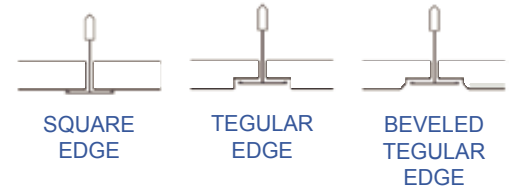
## Product Line Drawing :



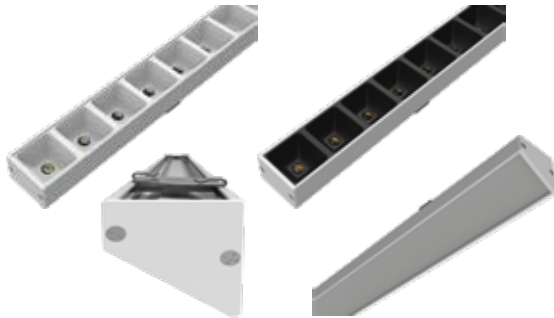
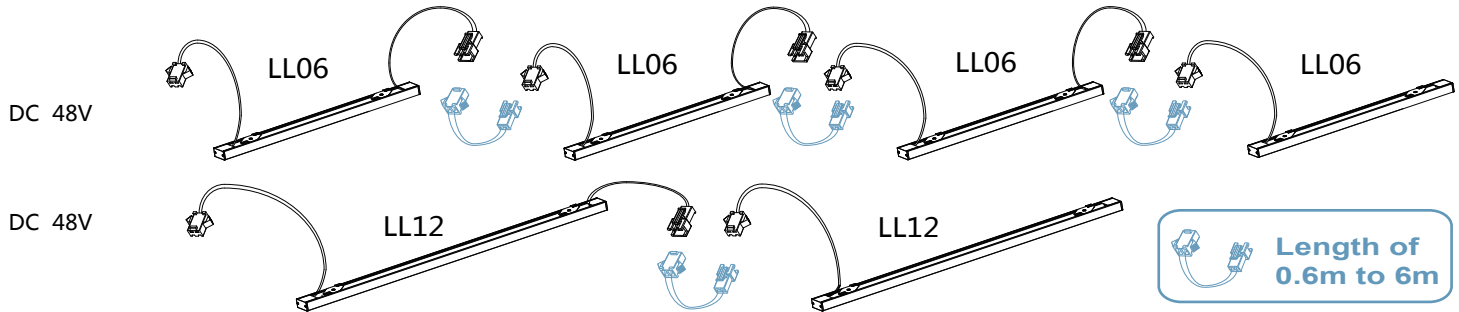
## Product Line Drawing :



Lyncolinks range can work with different tile edges on 15 and 24mm T bars :

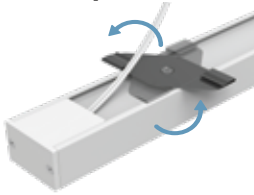


## Wire Diagram:

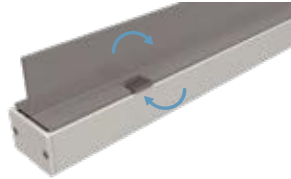


- Stylish Design
- Emergency Versions Available
- Dali and dimmable versions
- Easy to install less than 2 minutes
- Increases Lux Levels

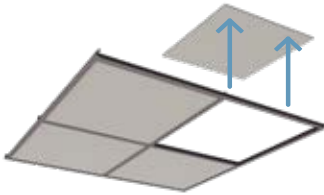
## Installation steps:



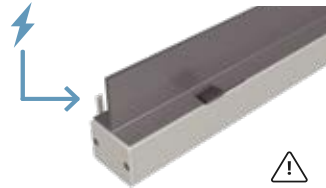
1. Move the hanger toward to the end cap as much as possible and turn the hanger vertically to the light fitting.



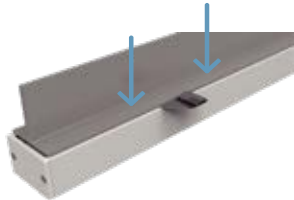
4. Turn the hanger clockwise and lock the hanger to the T bars.



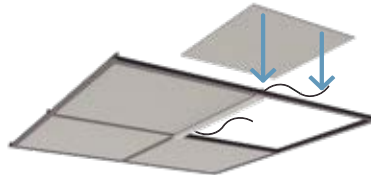
2. Remove the tiles from the T grid for easy installation.



5. Place the Low Voltage cable alongside the T bar and connect to DC 48V power Supply.



3. Place Lyncolinks under the T bar closely.



6. Place the tiles back to the ceiling.



7. Now the installation is completed.



Call mobile 07496068889

Email [bwelch@LumenLinks.com](mailto:bwelch@LumenLinks.com)

Office 01992 582980

Website [www.lumenlinks.com](http://www.lumenlinks.com)